

Smart Panel 8



EN



Simply smart

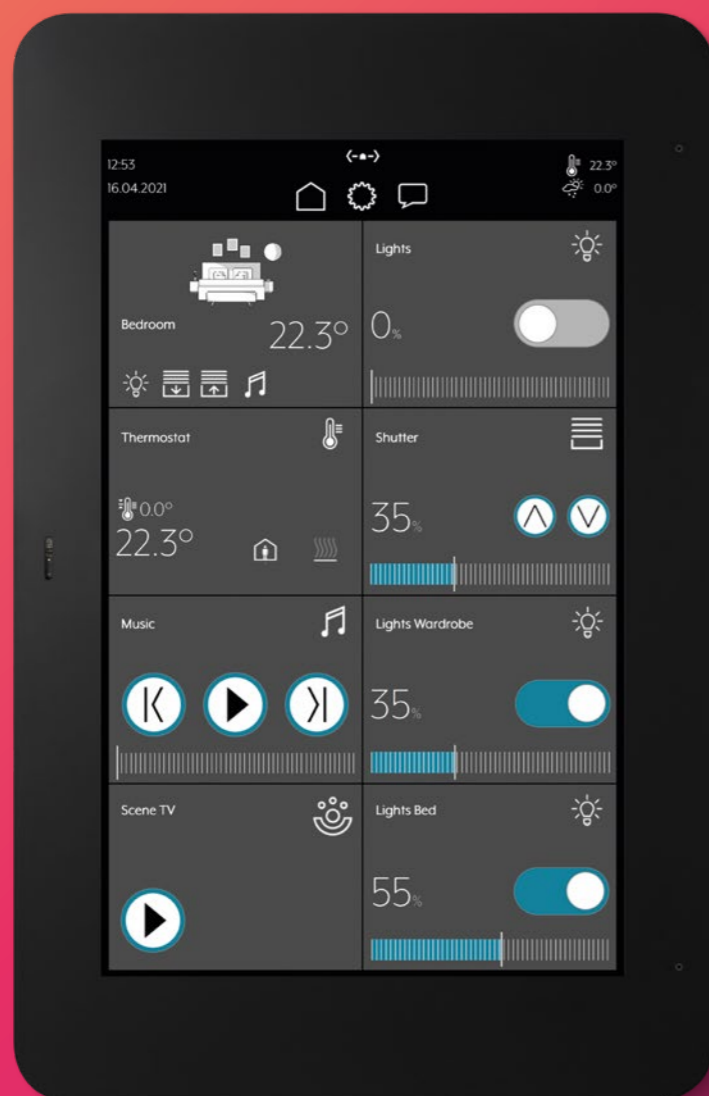
The JUNG KNX Smart Panel 8 touch display is the solution for visualising your KNX system – without an additional server. Centrally on the wall and decentrally with a tablet or smartphone in your network: the JUNG Smart Panel 8 provides comprehensive possibilities, for intuitively operating your KNX system.

- ☒ Graphical user interface Smart Vision to operate KNX devices.
- ☒ Operation via the JUNG Smart Vision app for smartphone or tablet.
- ☒ Remote access via the myJUNG Cloud.
- ☒ Standalone-solution that needs no additional server.
- ☒ Complete and cost-efficient visualisation of KNX.



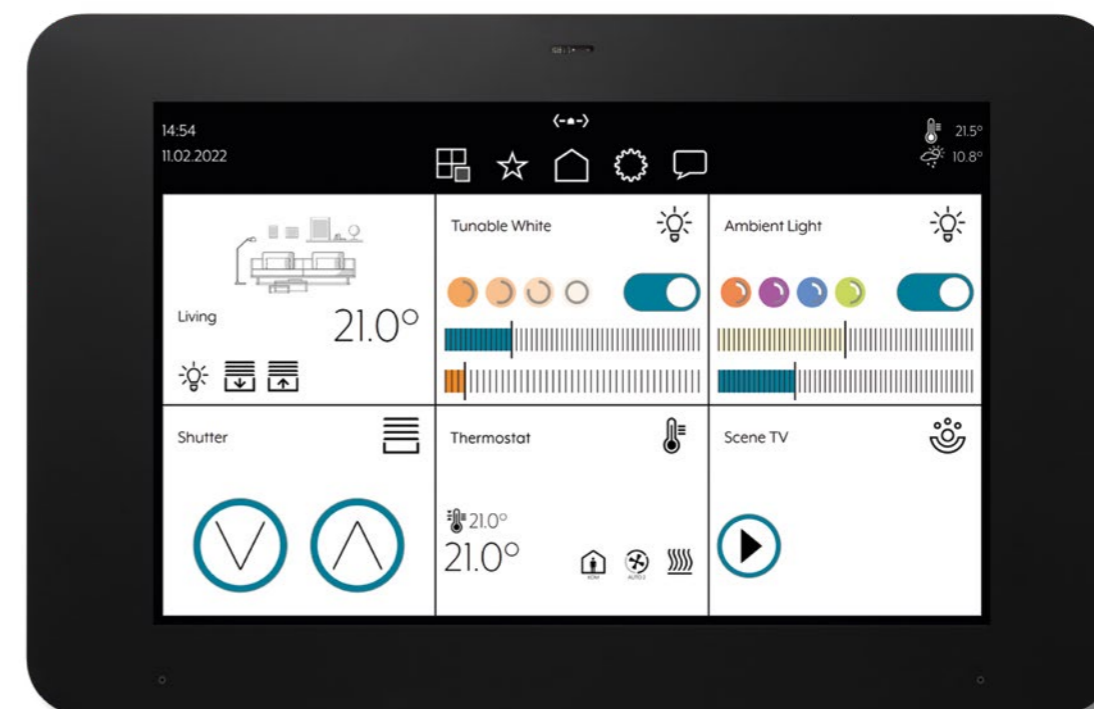
The user interface for the Smart Panel 8 is also available for smartphones and tablets: JUNG Smart Vision is ready for download in the app stores.

Light or dark



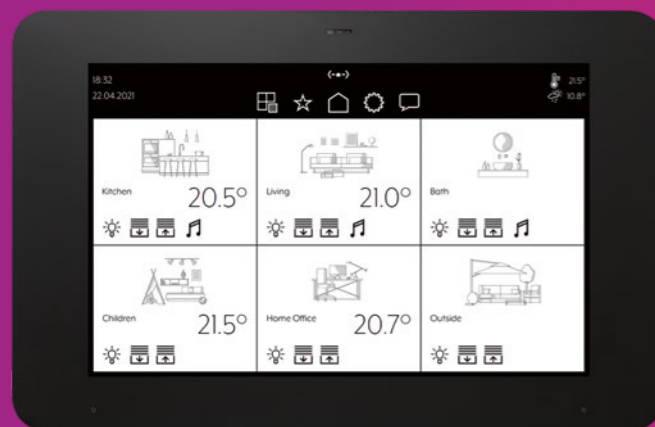
Smart Vision has both a light and a dark layout integrated. Completely to your taste and fitting to the interior, you can alter the layout at any time.

Portrait or landscape



Wall mounting of the JUNG Smart Panel 8 is possible in both portrait and landscape formats.

Intuitive and smart



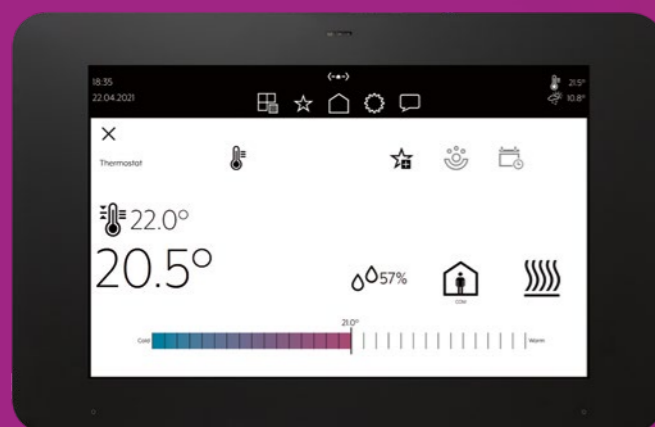
MAIN MENU

JUNG Smart Vision is the app interface for the KNX visualisation of the Smart Panel 8. The first level is the room level. It displays up to six rooms in a grid. More rooms can be displayed by scrolling vertically, with horizontal scrolling showing the first or last room. You can naturally also select a room directly. There you can see the elements and functions set up in this area.



ROOM VIEW

In the room view you can see functions such as dimming lights, switching on heating, lowering blinds and much more. The first tile shows the room itself together with its name and central functions. Clicking on an element takes you to the detail view.



ELEMENTS

The view of an individual element is the most detailed level within the Smart-Vision hierarchy. You can simply and clearly operate the functions, read the status, configure schedules, integrate the astro function and much more. With every Smart Panel 8 you can set up a maximum of 300 elements or rooms.



Sensors and functions



1 ROOM VIEW

Clear display in the JUNG Smart Vision app: it displays rooms and elements in the form of large tiles.

2 NAVIGATION

In the navigation bar you have quick access to the room view, settings, favourites or the last event registered.

3 SENSORS

A proximity sensor and a brightness sensor detect if you are standing in front of the panel and adjust the display brightness and ambient light accordingly.

4 STAY INFORMED

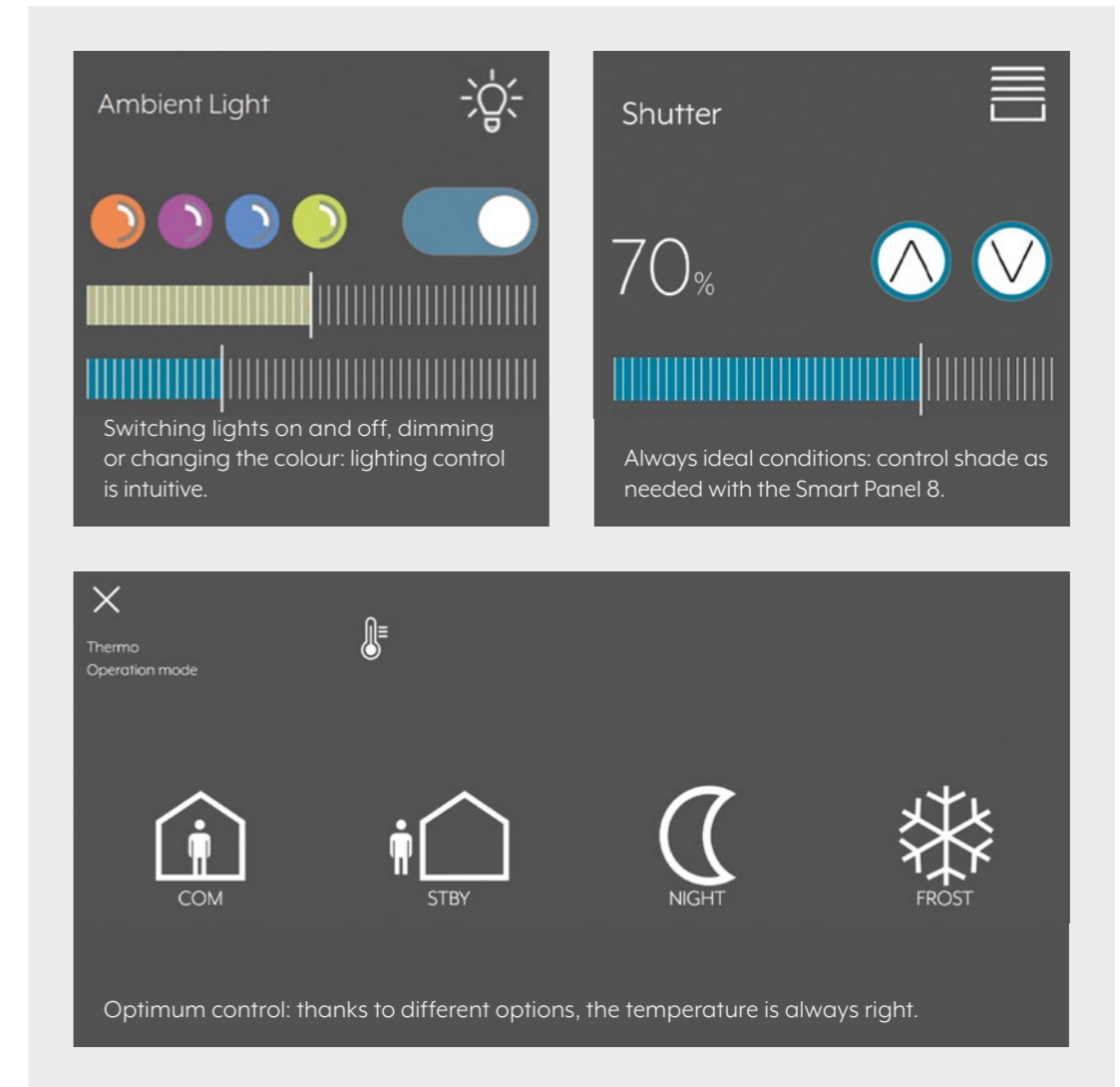
In addition, messages can be sent to stored e-mail addresses or directly to the smartphone via push notification.

5 FUNCTIONS

The functions are stored as elements (icons). You can call them directly here.

6 HOME BUTTON

The physical button switches the Smart Panel 8 on and off. Additionally, a short press opens the Launcher (page 14).



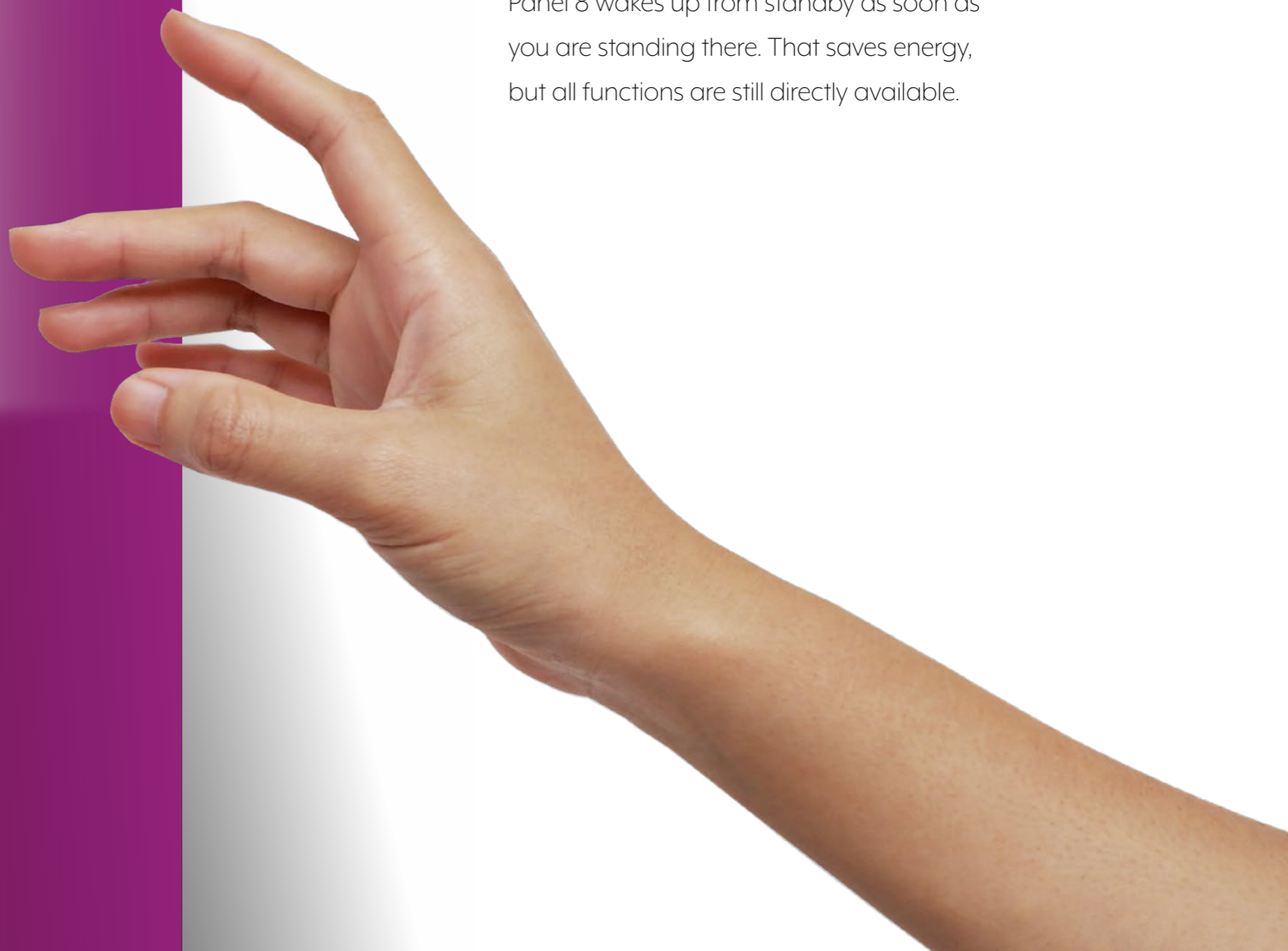
The functions of the Smart Panel 8 have been tailored to building visualisation. From intuitive lighting control via temperature control, shading, music to operating scenes and schedules. You can visualise and control everything in-

stalled in your KNX system with the Smart Panel 8. The clear interface of the Smart Vision makes it particularly easy for you with large icons and clear arrangement.

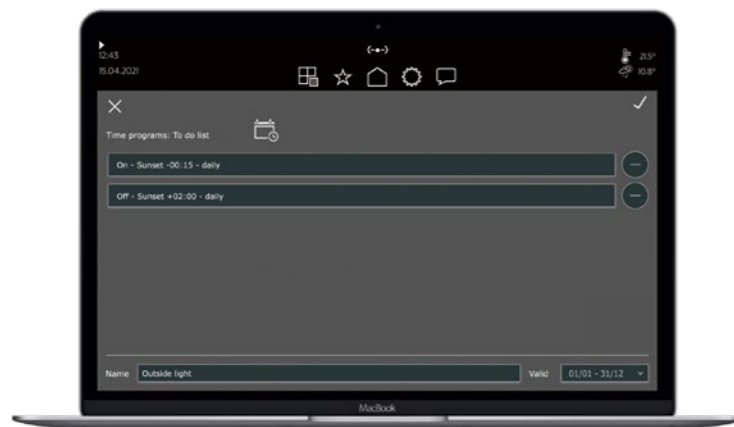


Rise and shine

Thanks to proximity detection, the Smart Panel 8 wakes up from standby as soon as you are standing there. That saves energy, but all functions are still directly available.



Simply smart functions



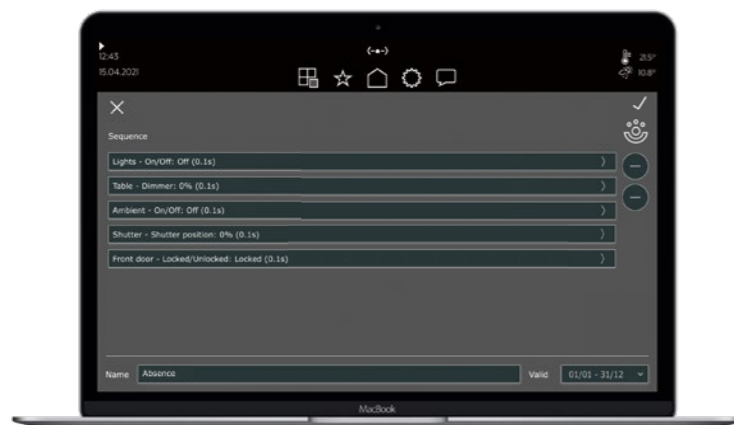
TIME SCHEDULE

Easy and uncomplicated: schedules run functions such as switching on lights or lowering shutters at specific times. For example, every morning at 8 am, the shutters are raised and at 7.30 pm in the evening the exterior lighting turns on. You can find schedules in the detail views of an element. Up to 125 elements with a maximum of ten commands each can be stored in the Smart Panel 8.



COLOUR CONTROL

Intuitive light colour control thanks to a simple selection with the colour picker: the control element in the form of a colour circle enables a quick selection of light colour and intensity.



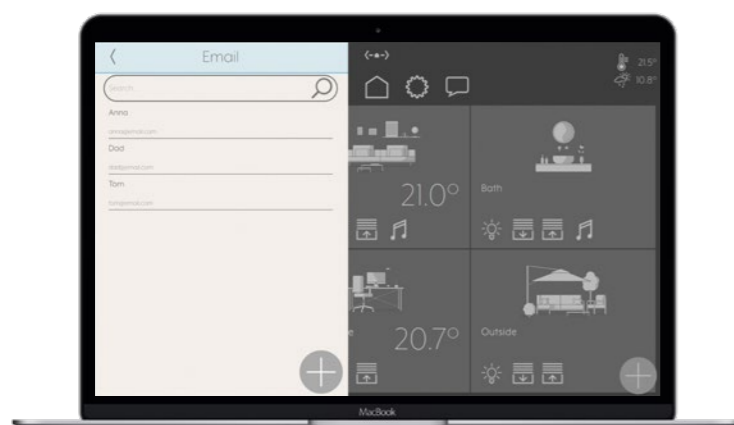
AUTOMATED SEQUENCES

With this kind of automatic control, there is a series of different functions: after just one press of a button, for example, the light turns on, then the blinds are lowered and then your individual playlist runs. You create sequences per room – just like an element. Furthermore, you can add schedules to sequences and allow them to run fully automatically.



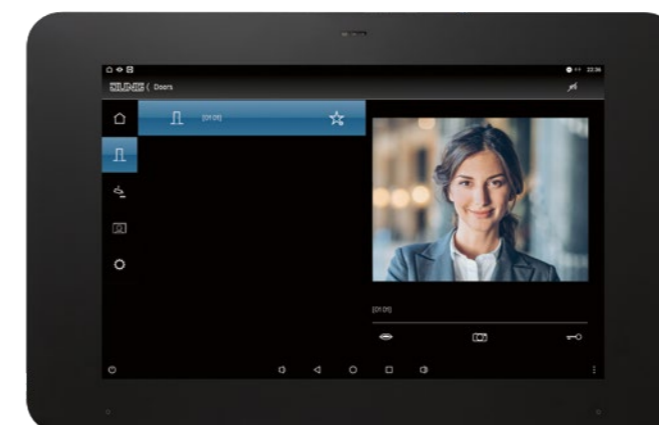
TUNABLE WHITE

Operation of Tunable White (TW) via KNX – with Tunable White, the colour temperature can be continuously regulated from warm white to cold white and thus matches the human biorhythm. The lighting thereby improves performance and wellbeing.



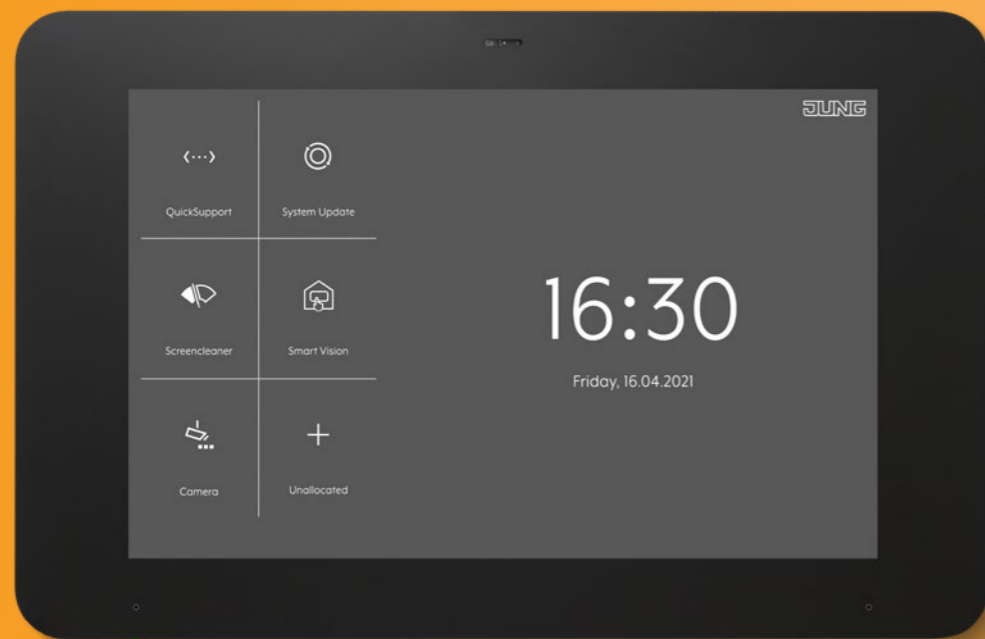
NOTIFICATIONS

Important events are displayed as pop-up messages. If needed, an acoustic signal can also sound. Pop-up-messages are displayed on the panel and the smartphone. In addition, messages can be sent to stored e-mail addresses or directly to the smartphone via push notification. Users can thus be informed about events even when they are not on site.



DOOR COMMUNICATION

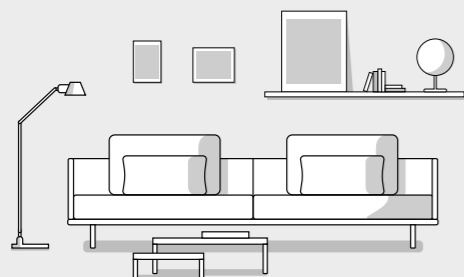
In combination with the Smart Gateway 650-/SG 150 from Siedle, the Smart Panel 8 also enables connection to the door communication in the local IP network. This ensures even more comfort. Users can call up the Siedle app for door communication via the JUNG Launcher.



Control centre

The heart of the Smart Panel 8 is the Launcher. Here you have the possibility of starting other apps such as QuickSupport, Door communication or JUNG Camera. In addition, you install updates here or call the panel settings using the logo at top right. To call the Launcher at any time, briefly press the HOME button in the middle on the lower edge of the Smart Panel 8.

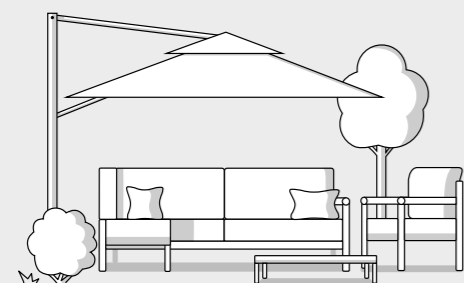
In the smart home



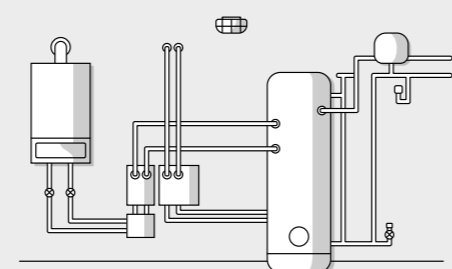
Living room, playroom or bedroom



Dining room or kitchen



Terrace

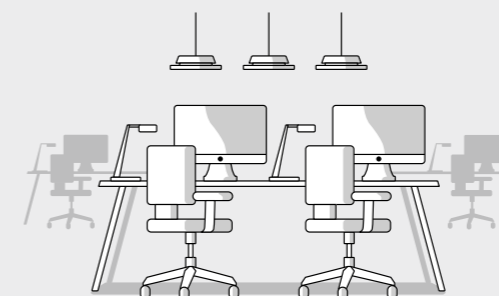


Boiler room

Thanks to the simple operation and clear visualisation, the Smart Panel 8 is ideally suited to the smart home. Completely according to your requirements you can set up the widest range of rooms and equip them with functions (the so-called elements). In the living room, do you want the blinds to be lowered automatically and the lights turned on? That is no problem using a sequence or a scene. In addition, the Smart Panel 8 helps to save energy by only running the heating when someone is at home.

- ✓ Live more comfortably with intelligent KNX technology
- ✓ Save energy with automation matching your needs
- ✓ A feeling of security thanks to presence simulation

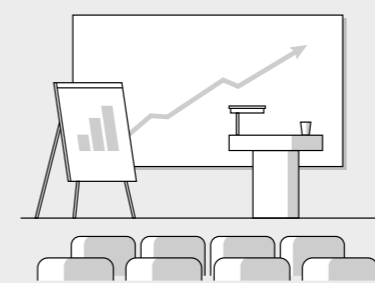
In the smart building



Office or meeting room



Bar or restaurant



Lecture room



Hotel reception

The Smart Panel 8 is also suitable for commercial spaces. The automated air conditioning in the meeting room, the perfect lighting mood at the bar, the ideal combination of light and shade in the office: with appropriately set up elements, logic and schedules, the Smart Panel 8 also makes particular convenience possible in the world of work. The individual room view can be switched off in the JUNG Smart Vision user interface.

- ✓ Shade when needed using schedule and astro function
- ✓ Optimum lighting mood with dimmed lighting and RGBW-light colour control
- ✓ Temperature adaptation with automatic climate control



Scan the QR code and download the JUNG Smart Vision.

Remote control

On the couch, in the garden, on the move: with the JUNG Smart Vision smartphone and tablet app, you can control the Smart Panel 8 even from a distance.

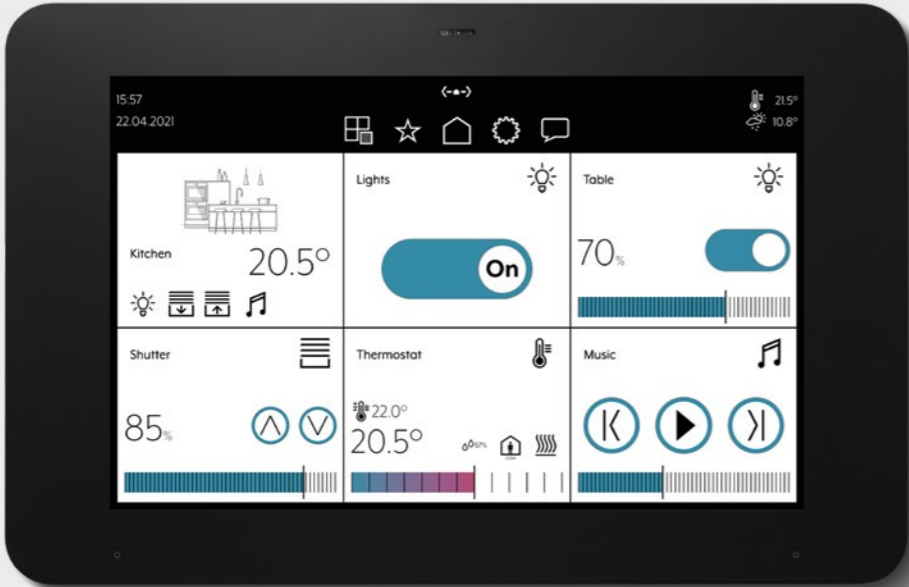
Messages about important information such as an open window right up to controlling functions. The app is optimised for your mobile device and supports vertical and portrait mode. Up to ten app users can be stored for WLAN access to the Smart Panel 8. By default, the connection between the smart-

phone or tablet and the Smart Panel 8 is initially established locally. With remote access, you can also operate your heating, lighting and shading at any time outside your local network via the myJUNG Cloud (requires remote access licence SP-REMOTE-L – available at jung.group/sp-remote-l).



Technical information

SMART PANEL 8



Equipped with modern technology, the Smart Panel 8 is the central control unit of the whole KNX system. It is always economical in energy use without compromising on performance. Regular updates guarantee security and performance.

SOFTWARE

Operating system Android

FRONT PANEL

Display 203 mm / 8.0" HD display

Resolution (in pixels) WXGA (1280 x 800)

GENERAL FEATURES

Processor Cortex-A53

RAM 2 GB

Supply voltage 12-32 VDC

Power consumption max. 16 W

Mass storage 16 GB flash (free storage depends on the operating system)

SENSORS

Proximity sensor integrated

G sensor for orientation integrated

Brightness sensor integrated

Input/output 2 x loudspeakers (1.5 W)
2 x digital microphones

INTERFACES

KNX KNX connection terminal
KNX medium TP 256

LAN / Ethernet 1 x 10/100/1000 Mbit/s

USB (Universal Serial Bus) 1 x USB 2.0

CONTROL

Home button 1 x Home button

AMBIENT CONDITIONS

Ambient temperature 0 ... +30 °C

Atmospheric humidity 5 ... 80 % (no condensation)

DIMENSIONS

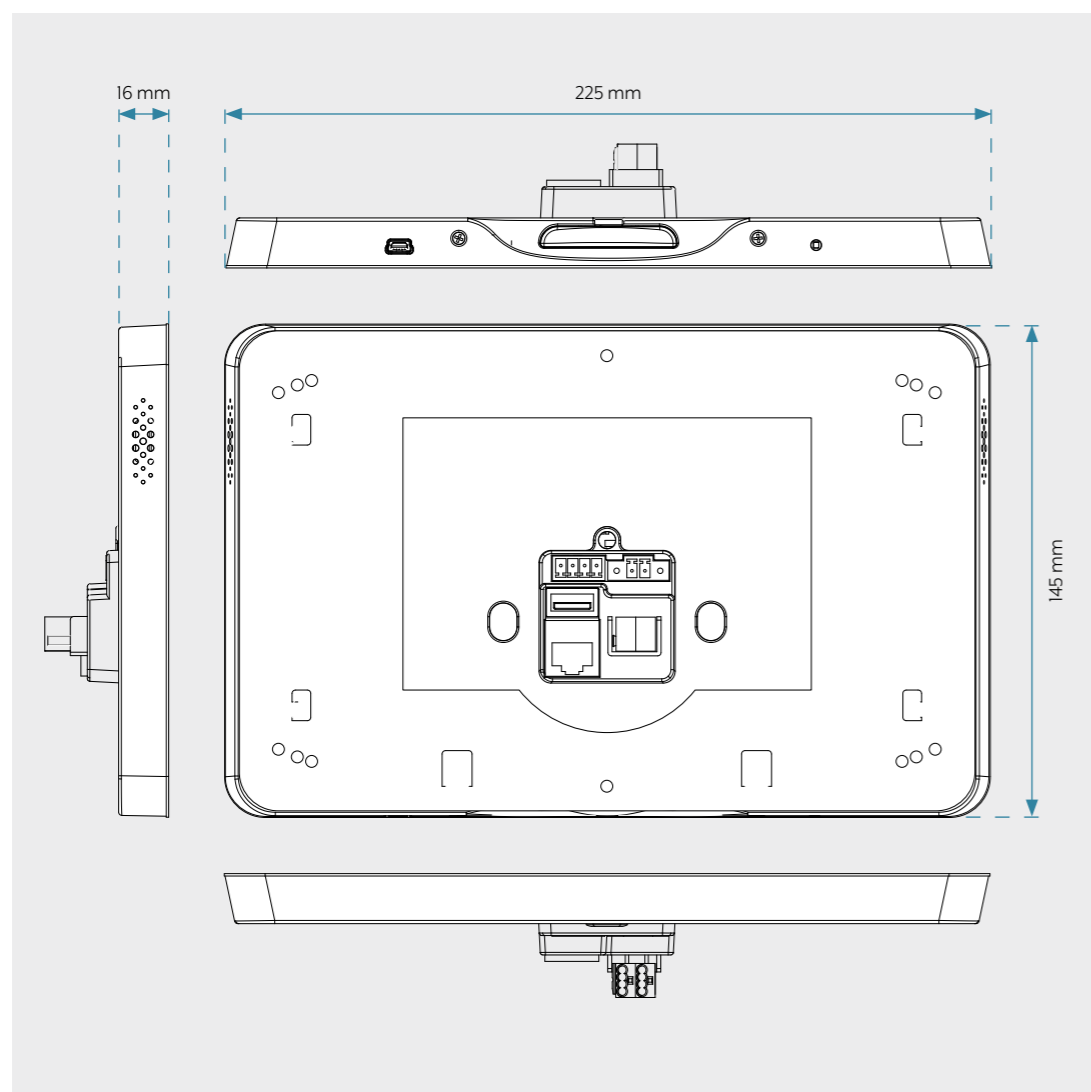
Overall dimensions (W x H) Smart Panel: 225 x 145 mm
Installation adapter: 216 x 141 mm

INSTALLATION

Simple installation thanks to the installation adapter supplied

Installation horizontally (recommended) or vertically in flush installation box (ref.-no. EBG 24) or on appliance box in accordance with EN 60670-1 (recommendation: approx. 60 mm deep)

Smart Panel 8 in detail

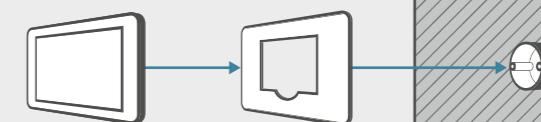


Flat device, extensive equipment: on the back of the Smart Panel 8 all the important connections are available. Right at the bottom on the edge of the touch panel there is the HOME button. The Smart Panel 8 can be installed in many existing boxes (retrofit).

Installation and fitting

APPLIANCE BOX IN ACCORDANCE WITH EN 60670-1

Deep standard boxes are ideal for installing the KNX Smart Panel 8. Recommended depth of the box: approx. 60 mm.

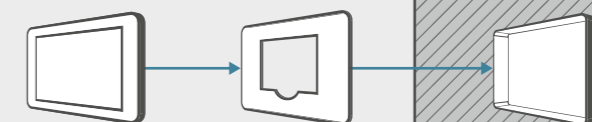


RETROFIT

The EBG 24 installation box of the JUNG Smart Panel 5.1 as well as older devices and products with the same shape are suitable for retrofitting with the Smart Panel 8.



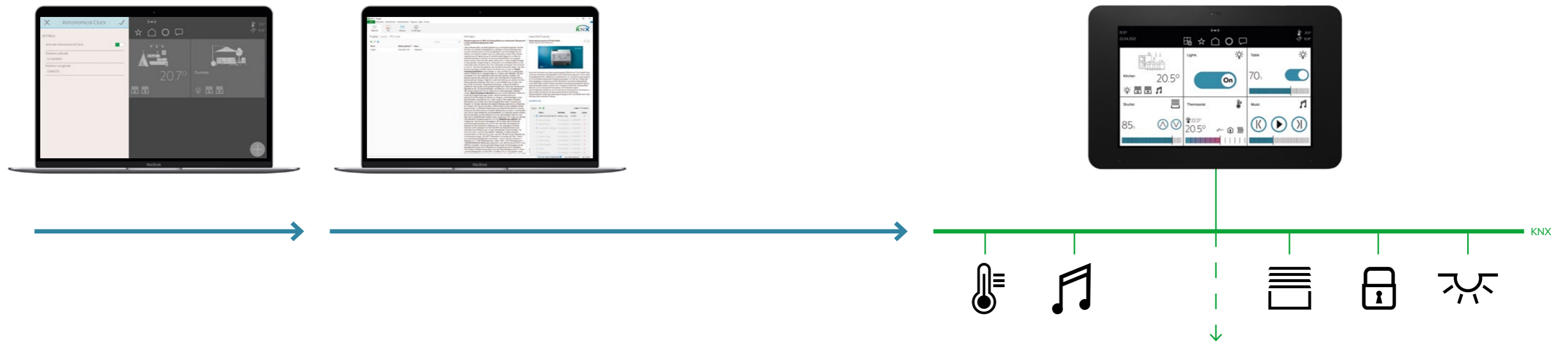
Thanks to the adapter supplied, flush installation housings from the Smart-Control range SC 7 EBG can also be used.



JUNG has thought particularly of modernisers with the Smart Panel 8. The touch panel is ideally suited for retrofitting and fits onto the familiar flush EBG 24 installation housing and

the SC 7 EBG. Installation onto the standard device housing in accordance with EN 60670-1 is also possible. The recommended box depth is around 60 millimetres.

Commissioning via the ETS



PLANNING

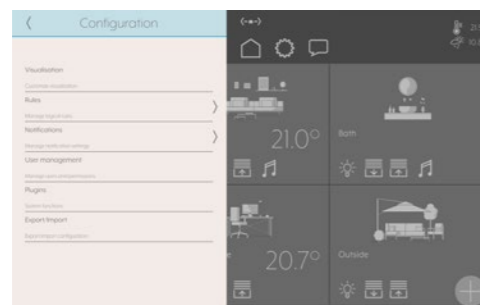
Installers plan Smart Vision with the KNX SMART PANEL DESIGNER Windows software. This can be done jointly with the owner as they can see directly what they will be able to operate on the Smart Panel 8. At the end there is a project file.

INTEGRATION

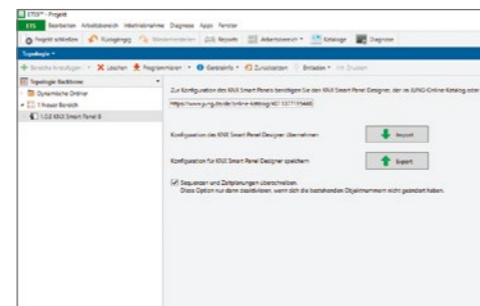
The installer imports this project file quickly and easily with a device configuration app (DCA) to the ETS. The required KNX communication objects that will then be linked with the group addresses of the installation appear as normal.

PROGRAMMING

The programming of the Smart Panel 8 comes at the end. The installer then programs visualisation, communication objects and group addresses of KNX actuators, sensors and push-buttons with the help of the ETS into the device.



Lighting, shading, temperature, music, internal logic and much more: the planning works easily and quickly.



The import of the project file into the ETS is carried out via the DCA JUNG KNX Smart Panel 8. Available in the MyKNX-Shop.



Switch/blinds actuator
6-gang



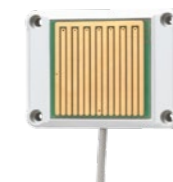
Standard automatic switch



KNX push-button sensor F 40



Weather station



Rain sensor



Glass-break sensor

KNX – the worldwide standard

You can rely on KNX and KNX Secure if you want to live and work smart. The field bus is the standard for equipping private and commercial buildings with future-proof building system technology. KNX allows central and individual networking and control of the components in house and building automation.

As early as 1990, JUNG founded the European Installation Bus Association together with other companies. With the development of the European Installation Bus, we laid the foundation for the KNX standard that is uniform across the world today.

The European EN 50090 standard is established as the global standard in accordance with ISO/IEC 14543-3. With this, the KNX brand stands for the system compatibility of the products of all manufacturers. With encryption using KNX Secure, the system is now even more secure.



The intelligent, worldwide standard for the modern building: in this way, investors and owners, but also planners, architects and electricians, have long-term security. From easily operated controls to complex systems, the JUNG KNX components offer comprehen-

sive, futureproof solutions for controlling, visualisation and organisation of the building system technology. The smart JUNG products cover areas such as lighting, shading, heating, climate, security and multimedia.

KNX – FACTS AND FIGURES

1990

Over 30 years on the market



Over 123 123 partners in 186 countries



500 manufacturers in 49 countries



501 training centres in 73 countries

STATUS: MAY 2024

ALBRECHT JUNG GMBH & CO. KG

P.O. Box 1320

58569 Schalksmühle

Germany

Phone +49 2355 806-0

Fax +49 2355 806-204

international@jung.de

For sales contacts in your country see:

jung-group.com/contact

JUNG-GROUP.COM